



KATANGA

LOOSE LAY &
GLUE DOWN LVT



Color: Macadamia



KATANGA

LOOSE LAY &
GLUE DOWN LVT

Katanga Loose Lay & Glue Down LVT brings you high performance flooring options with protective Cobalt Guard finish, providing superior scratch, scuff, and indentation resistance. Made with design and budget in mind, Katanga is your everyday flooring choice that combines contemporary style and durability for the highest foot traffic areas.

STANDARD CONSTRUCTIONS:

- 2MM 12MIL
- 3MM 20MIL
- 5MM 20MIL
W/ ATTACHED
PERFORMANCE PAD



**SUPERIOR SCUFF &
SCRATCH RESISTANCE**



**QUALIFIES FOR LEED
CREDITS**



**100% RECYCLABLE &
PHTHALATE FREE**



**ENHANCED
POLYURETHANE
COBALT GUARD FINISH**



KATANGA

LOOSE LAY & GLUE DOWN LVT



POLAR
K##-800



MYRTLE
K##-801



SAND DUNE
K##-802



MACADAMIA
K##-803



ARCTIC
K##-804



TUNDRA
K##-805



BISON
K##-810



IVORY
K##-824



OXFORD
K##-813



BARNWOOD
K##-825



AMARETTO
K##-827



MOCHA
K##-828



MINERAL
K##-807



CARIBOU
K##-808



KATANGA

LOOSE LAY & GLUE DOWN LVT



ARCADIA
K##-826



HOOT
K##-814



DOE
K##-821



CAPETOWN
K##-811



KONA
K##-829



BOA
K##-817



WALNUT
K##-830

TILE VISUALS



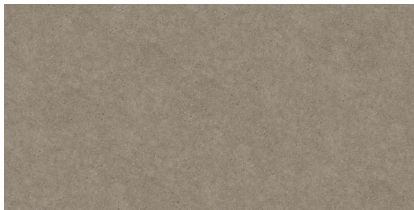
MUSHROOM
K##-831



MAGNOLIA
K##-833



LIMEWASH
K##-835



PONDER
K##-832



BALTIC
K##-834



STERLING
K##-836



SPECIFICATIONS

	2mm 12mil	3mm 20mil	5mm 20mil w/ Attached Performance Pad
Nominal Size	7"x48" Wood Visual 12"x24" Tile Visual	7"x48" Wood Visual 12"x24" Tile Visual	7"x48" Wood Visual 12"x24" Tile Visual
Overall Thickness	2mm	3mm	5mm
Wearlayer Thickness	12mil	20mil	20mil
Edge	Square; Non-Bevelled	Square; Non-Bevelled	Square; Non-Bevelled
Finish	Cobalt Guard	Cobalt Guard	Cobalt Guard
Installation Method	Glue Down	Glue Down	Loose Lay or Glue Down
Item/Color Identifier	K12-###	K320-###	KP5-###
Sq. Ft. Per Carton	7"x48": 51.39 Sq. Ft. 12"x24": 52.74 Sq. Ft.	7"x48": 35.04 Sq. Ft. 12"x24": 37.98 Sq. Ft.	7"x48": 23.36 Sq. Ft. 12"x24": 21.10 Sq. Ft.
Residential Warranty	20 Year	Lifetime	Lifetime
Commercial Warranty	7 Year Light	10 Year	10 Year (no rolling loads)
ASTM E90 / E492 Acoustical Rating (6" Concrete Slab / No Ceiling)	N/A	N/A	IIC 53 STC 54
ASTM E90 / E492 Acoustical Rating (18" Open Truss)	N/A	N/A	IIC 58 STC 61 HIIC 52

Cobalt adhesives available for all applications. Coordinating moldings available. Additional wear layer and thickness options available.